

WPAC Architectural LED Wall Pack

The WPAC LED Wall Pack as the next generation is designed to efficiently illuminate walkways, areas, and general lighting applications. The WPAC LED Wall Pack features an advanced LED optical system that provides high uniformity, excellent vertical light distribution, reduced on-site glare and effective security light levels. The WPAC LED Wall Pack offers identical photometric to the EANB Area Light, which allows lighting designers to capitalize on the same features without compromising site layouts. In keeping with a sleek design strategy, this product offers a modern look, balancing the need for photometric scalability with reliable workhorse performance.

MOUNTING AND WIRING

Mount directly over a standard outlet box or for surface wiring via any of the 3 convenient $\frac{3}{4}$ inch threaded conduit entry hubs. Support installation of $\frac{7}{8}$ inch hole.

Trunnion installation.

ENVIRONMENTAL SYSTEM

ETL/cETL Listed for outdoor locations.

ELECTRICAL SYSTEM

Universal input voltage 120-277VAC, 50/60Hz.

OPTICAL SYSTEM

High performance LM80 LEDs mounted on metal core board and integral aluminum heat sink.

Color Temperature: 3000K/4000K/5000K.

LIGHTING CONTROL

0-10Vdimnable/photocell



Specifications:

ITEM	SPECIFICATION	KLWPAC35	KLWPAC70
GENERAL PERFORMANCE	Power Consumption(W)	35W	70W
	Lumens Delivered (lms)	3300lms	7500lms
	Efficacy (lm/W)	95lm/W	106lm/W
	CRI	>70	>70
	Color Temperature	3000K/4000K/5000K	3000K/4000K/5000K
	L70	More than 50,000 hours	More than 50,000 hours
ELECTRICAL	Power Factor	0.98 at 120VAC 0.90 at 277VAC	0.98 at 120VAC 0.90 at 277VAC
	Input Voltage	120-277VAC	120-277VAC
	Housing	Die-cast aluminum body (Bronze/Black)	Die-cast aluminum body (Bronze/Black)
PHYSICAL		Glass cover, PC lens	Glass cover, PC lens
	Installation	Recessed outlet box or wall surface, Trunnion, Support	Recessed outlet box or wall surface, Trunnion, Support
	Operating Temperature	-30℃ up to 50℃ (-22℉ up to 122℉)	-30℃ up to 50℃ (-22℉ up to 122℉)
	Environment	Suitable for damp/wet locations	Suitable for damp/wet locations
CERTIFICATION	Warranty	5 years	5 years
	Certification	ETL/cETL	ETL/cETL

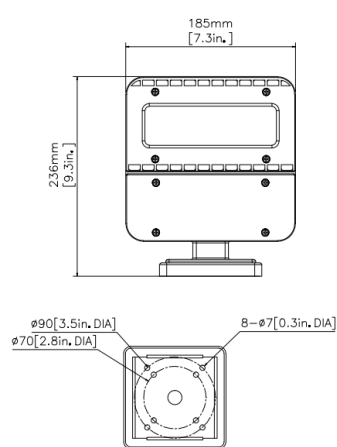
Order Information:

Family	Wattage	Separator	CCT	Version	Mounting	Default
KLWPAC	35: 35W	-	30K: 3000K	S: Standard	A: Wall mount	X
Kili-LED full cut-off	70: 70W		40K: 4000K		B: Support	
LED Wall Pack			50K: 5000K		C: Trunnion	

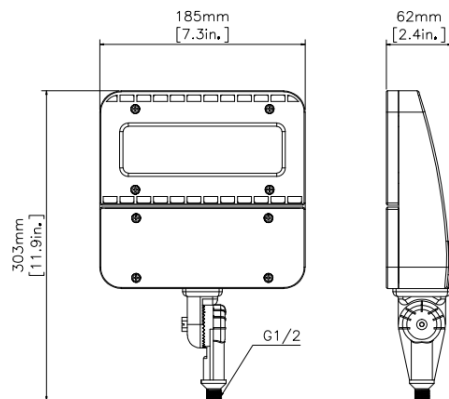
Dimension: (mm/in)

KLWPAC35:

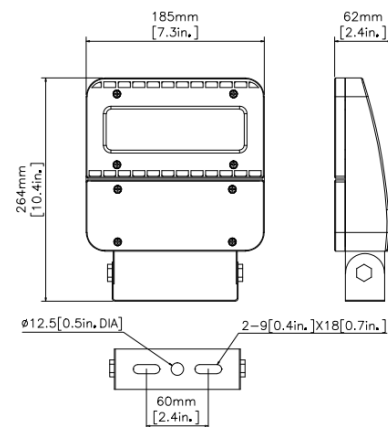
TYPE A



TYPE B

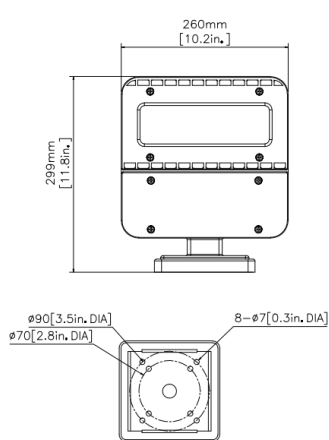


TYPE C

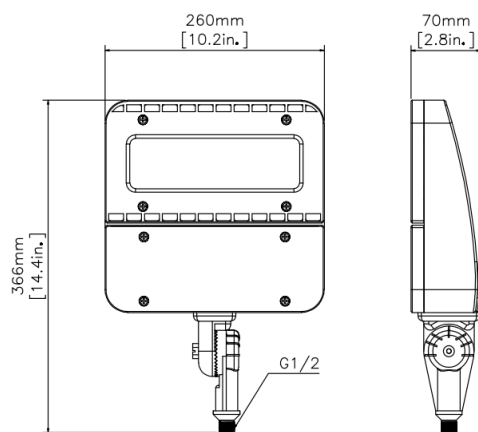


KLWPAC70:

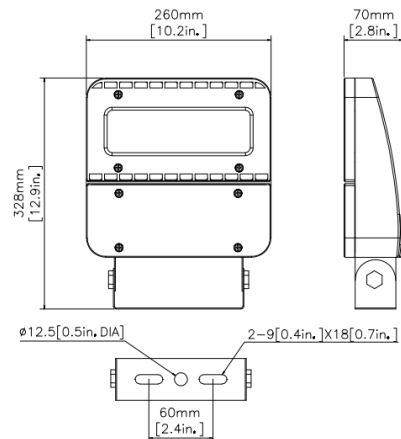
TYPE A



TYPE B

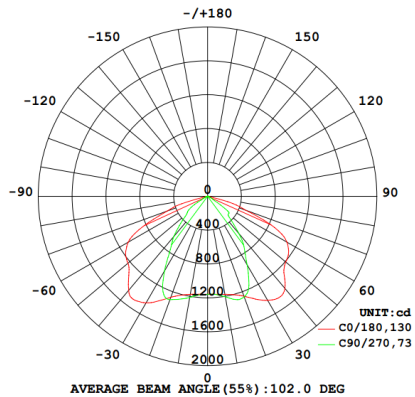


TYPE C

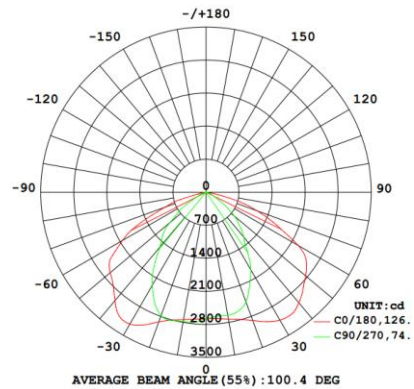


Photometric:

Luminous Intensity Distribution Diagram (Unit: CD)



KLPWAC35



KLPWAC70

KLPWAC35:

G/W: 9.38kgs (20.70lbs) /4pcs

Carton Dimension: 52cm*22cm*29cm /4pcs

KLPWAC70:

G/W: 12.00kgs (26.50lbs) /4pcs

Carton Dimension: 52cm*22cm*33cm /4pcs